



Ontario Centre of Excellence
for Child and Youth
Mental Health

Bringing People and Knowledge Together to Strengthen Care.

Suicide prevention on campus

Centre for Innovation in Campus Mental Health

May 25, 2018 Webinar

Cecilia Marie (Flynn) Roberts

Youth Suicide Prevention Consultant

cmflynn@cheo.on.ca

(613) 737 2297 x 3388



About us

We bring people and knowledge together to strengthen the quality and effectiveness of mental health services for children, youth and their families and caregivers.

SERVICE AREA SUPPORT

strengthen skills and knowledge in key areas that lead to **improved outcomes**

SYSTEM SUPPORT

provide consistent evidence-informed approaches that **enhance service planning and delivery**

IMPACT AND INNOVATION

inspire excellence and innovation through **continuous learning, evolution and innovation**



Ontario Centre of Excellence
for Child and Youth
Mental Health



Online Toolkit

TOGETHER  **LIVE**



Ontario Centre of Excellence
for Child and Youth
Mental Health



Suicide Prevention on Campus

Centre for Innovation in Campus Mental Health
May 25, 2018 Webinar

Alison Burnett, RN, MScN
Director, Student Wellness
University of Guelph
burnetta@uoguelph.ca
(519)824-4120 ext 54333



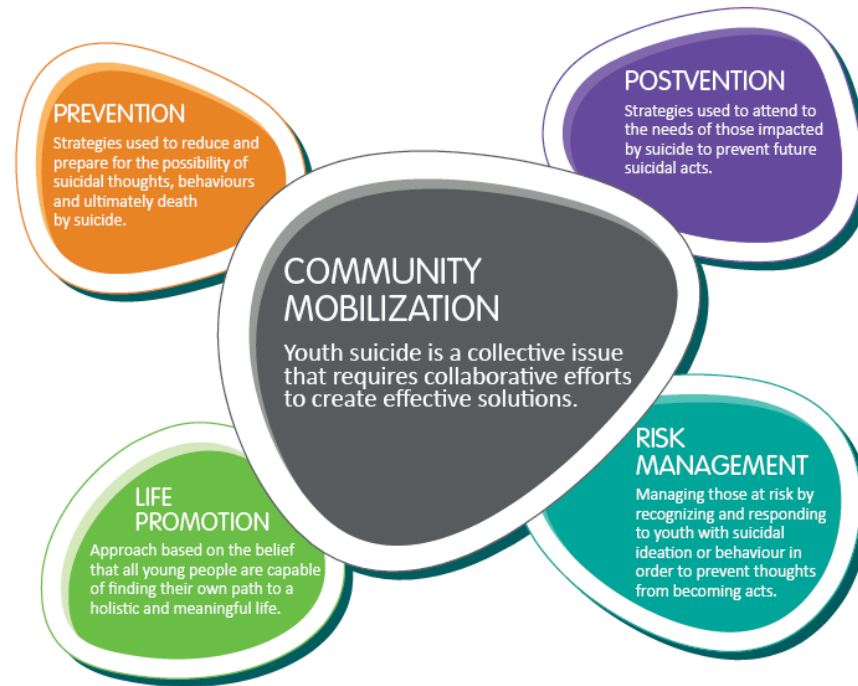
Life Promotion/Suicide Prevention

A holistic approach that goes beyond the immediate goal of alleviating distress and works with young people to harness their sense of hope, meaning, belonging and purpose



Ontario Centre of Excellence
for Child and Youth
Mental Health

Campus Suicide Prevention



Campus Suicide Prevention

Mental Health Promotion

education and awareness

policy development

resiliency building

Prevention

programs for high risk populations

Risk Management/Intervention

training

Our Community Framework



Postvention a closer look



Ontario Centre of Excellence
for Child and Youth
Mental Health

Our Community Framework



Who to include?

Senior level leadership

University Communications

Community Partners

Student Leaders

Academic Deans/Faculty

Front Line staff

Campus Police

Crisis support teams/Student at Risk Team



Making a Plan

- Postvention Implementation team members their roles and responsibilities
- Confidentiality issues
- Communicating with the family
- Memorials
- Dealing with the media/social media
- Prepared Resources
- Caregiver support





Get Going

- What training do members of the team need?
- How do we activate once a suicide has occurred?
- Who will coordinate and communicate the response across the entire team?
- What will support for team look like?



Challenges

- Communication with those that need to know, respecting of privacy
- Emergency fan out
- Departmental protocols
- Internal politics
- Social media pressure



Evaluate your efforts

- Debriefing afterwards will be important
- Providing opportunities for students/staff/faculty/partners to comment on the helpfulness of the response





Sustainability

- Revisit the policy annually
- Make it part of the orientation process for staff, student leadership others
- Consider training for those involved
- Document past experiences to support learning

